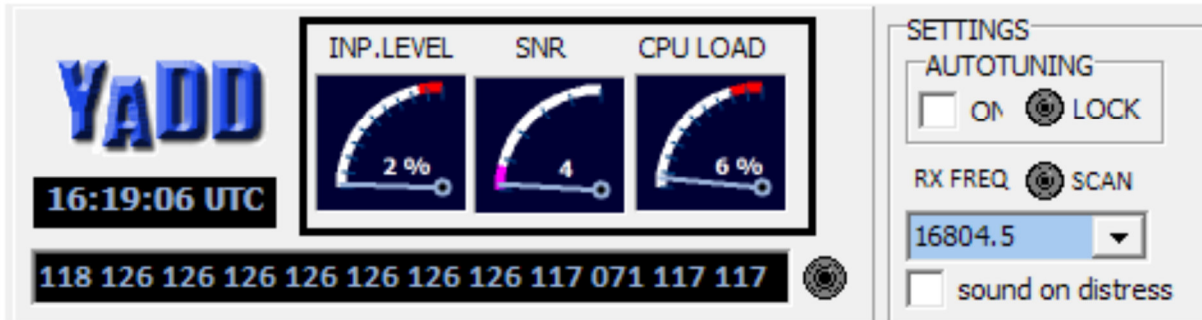


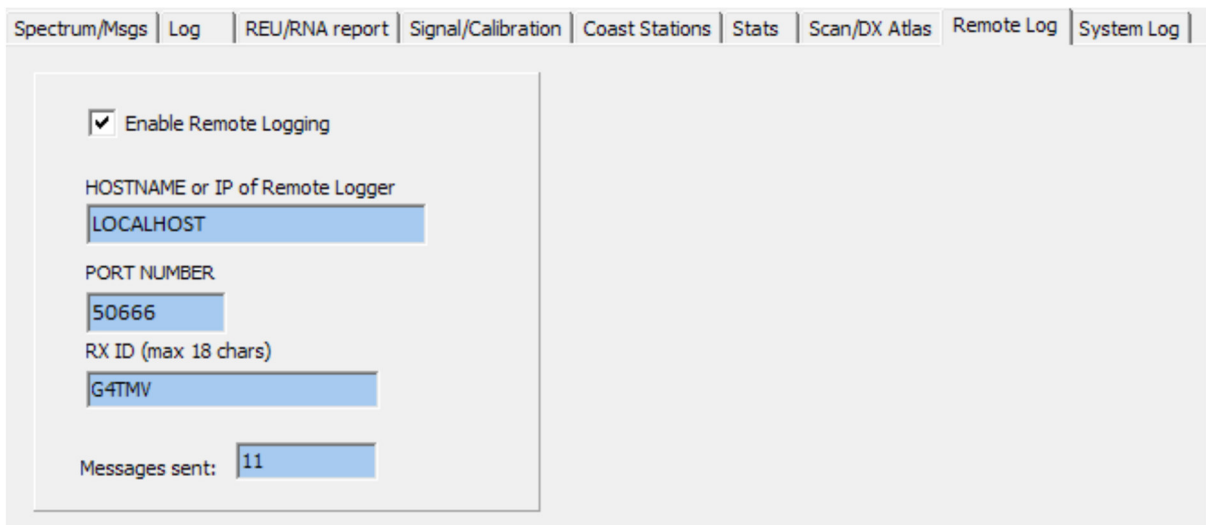
YaDD DATA ACCURACY

When uploading your DSC catches to YaDDNet it is important to ensure that you have your decoder frequency set to the frequency your receiver is tuned to, e.g. 16804.5 kHz on the receiver display and 16804.5 in YaDD's 'RX Freq' window.

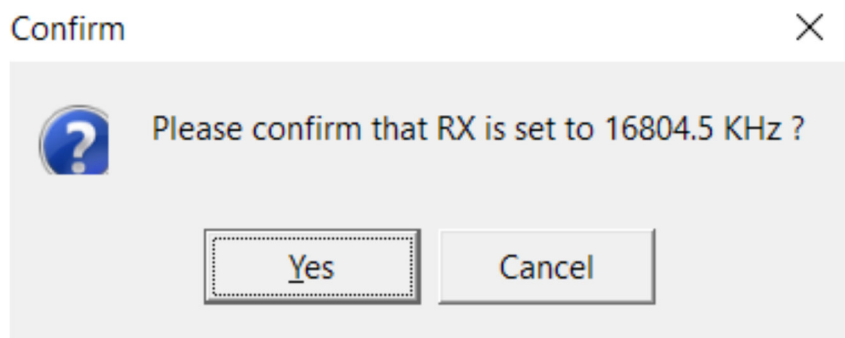
YaDD 1.7.1 Yet another DSC Decoder



If you wish to have your decodes uploaded to YaDDNet you have to click on the 'Remote Log' tab, and then check the box marked 'Enable Remote Logging', this will ask you to confirm that your receiver is set to the frequency that YaDD is set for, and at this point it is important to be sure that this is correct before clicking 'OK', otherwise you will be uploading incorrect data to the online database, which reduces its accuracy and effectiveness for other users.



If you use SCANNING in YaDD - please be sure to confirm that your receiver really is scanning BEFORE you enable the remote log upload feature.



According to **John, GM4SLV**, the creator of YaDDNet:

"Just enabling "SCANNING" within YaDD is not sufficient - you need to have the correct remote-control functionality already working between your PC and your Receiver. YaDD will send frequency change instructions to a Perseus or other Icom CiV protocol receiver, but you MUST be certain you have set this up correctly. YaDD will not "magically" give you remote control of your receiver simply by enabling "SCANNING"."

A failure to do this will produce many false reports and may lead to your uploads having to be removed from the database, which creates a lot of unnecessary work for the site administrator.

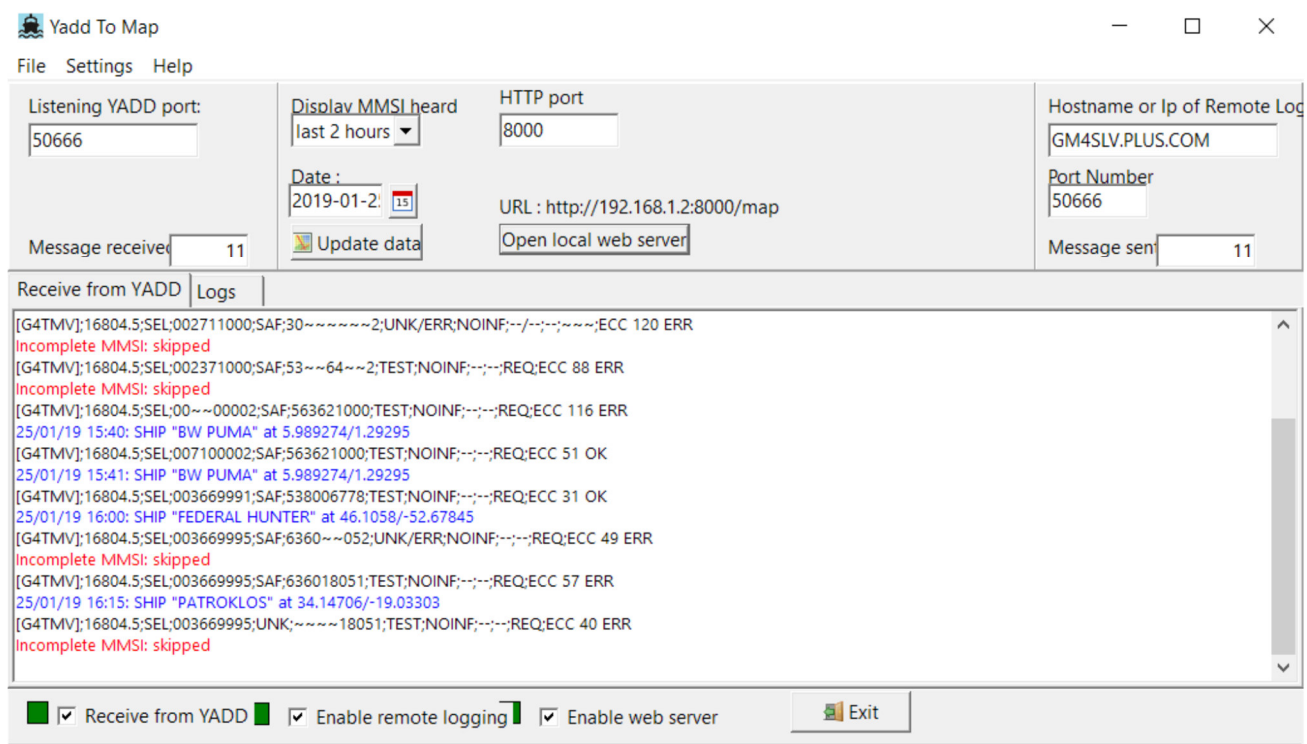
YaDDNet is great facility which anyone can use and contribute to, but we must reiterate that it is very important to make sure that your receiver and YaDD's frequency settings are correct for this to work properly.

You can see your uploads at the YaDDNet site and check that they are accurate, and if you find that your results do not match the ones that were being posted by other users at that time then please be sure to double check your radio and YaDD's settings:

YaDDNet:

<http://gm4slv.plus.com:8000/index.php>

There is also an excellent new program called 'YaDDtoMap' produced by **Claude Marani**, and which can now be downloaded from the NDB List Datamodes page. This will also allow you to upload your YaDD decodes onto a map in your browser, and again you can use this to check that you are sending the correct frequency information, as this is displayed in the 'Receive from YaDD' panel and shows the frequency that was selected.



Alan Gale, G4TMV

Last updated: 25th of January 2019