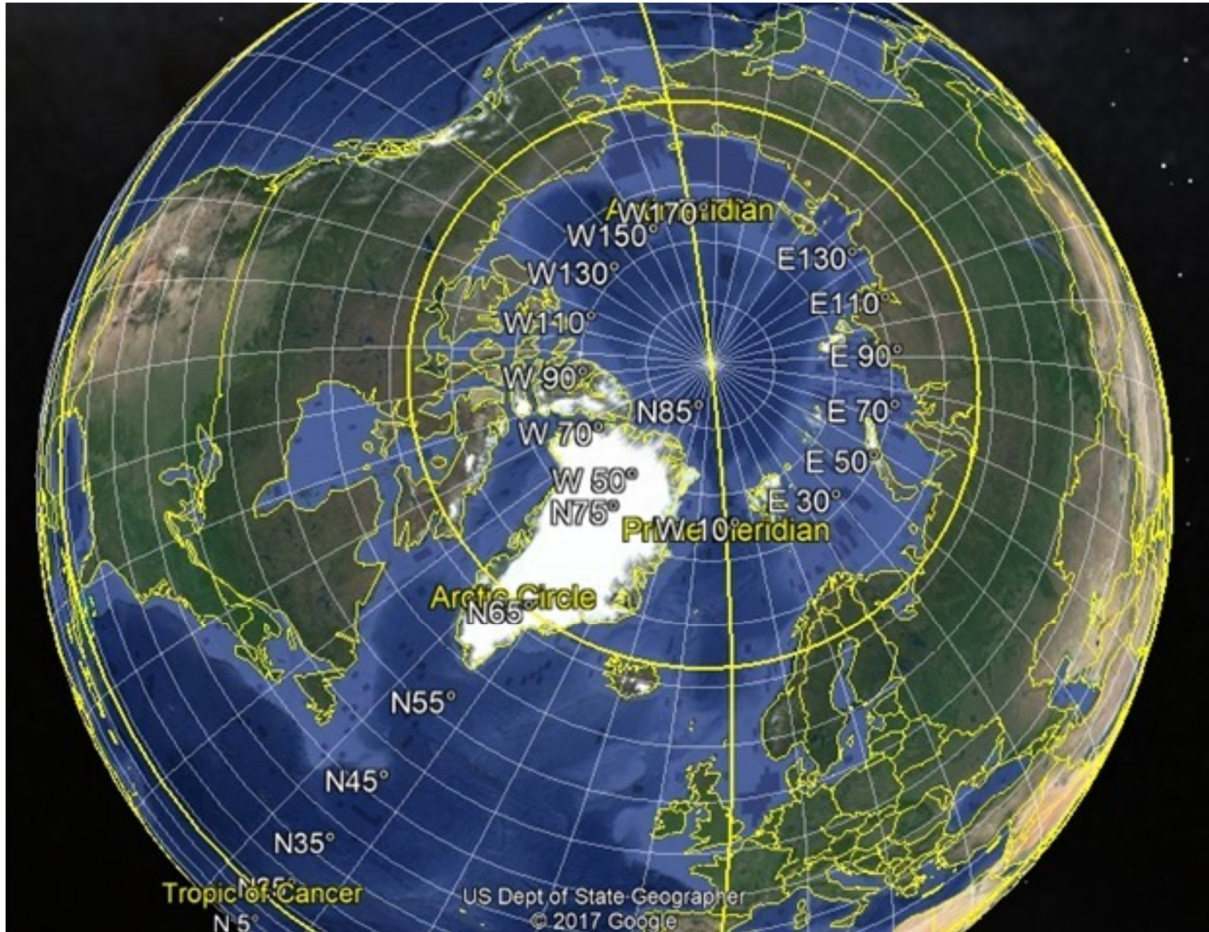


SANTA CLE226 -Coordinator's bits and bobs

OUR ARCTIC TARGET AREA is within the yellow 'circle' in this map from Google Earth. It will give you an idea of how its countries lie relative to your own listening position.



Yes, ideally you need to be in Canada or Northern Europe, but some logs will be made from further south. (If you are badly placed, why not try your SANTA CLE listening **via a remote SDR** located further north, such as <http://websdr.ewi.utwente.nl:8901> or you could try one of the many Kiwi SDRs – see www.sdr.hu)

You can make a **CURRENT SEEKLIST** of the Arctic NDBs as follows:
(it would also include any updates made in RWW during recent days)

Go to RWW <https://www.classaxe.com/dx/ndb/rww/>

In the 'From GSQ' box: enter IR99xx (this is a Locator next to the Pole).

In the 'DX' boxes: enter 0 to 2616 km (or 1626 miles).

The Arctic Circle is that distance from the Pole

Check "only active" - unless you also want to see closed NDBs.

At the top: change 'Show' to All Results.

You should get about 130 NDBs in the list.

You could then change the sort order by clicking on a column heading
e.g. click on 'ITU' to sort by Country (re-click to reverse the sort).

I've had a **BIT OF GOOD LUCK!**

All emails where the Subject includes 'CLE' (or 'cle') are sent to my CLE Folder by my Live Mail 'Message Rules'. It means that I shouldn't fail to find every CLE log (and I don't need to check all the main List emails as well every day).

This week there were a lot of useful exchanges ahead of the Bearings CLE about Great Circle maps, which I read with interest. I didn't realise for some time that most of those emails didn't have CLE in their titles, but they **still went into my CLE folder**. Puzzle?

Great Circle has got 'cle' in it!

I wish you really **meaningful good luck** with your Santa CLE226 hunting between midday on Christmas Day and midday on 2 January.

(Please read the advice carefully in the Final Details about log making, etc.)

73

Brian

(CLE Coordinator)

(P.S. If there are strange characters appearing in the above, should I be using different encoding?)